

Hot dog stands in Vienna



HOT DOG STANDS IN VIENNA



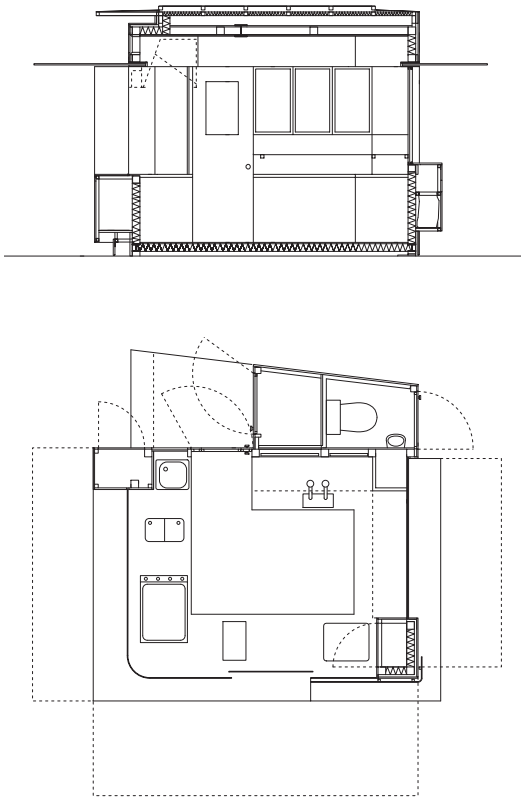
Vienna's hot dog stands, selling a range of grilled sausages, are very much part of the street scene in this city; all kinds of people stop by for a quick snack and a friendly word. The one on Albertinaplatz, right by the famous Albertina Museum, has been given a stylish architectural upgrade. Its trapezoidal plan and the alignment of its main sides respond to the complex interrelationship of the existing structures on and around this important square.

High-quality materials and careful detailing characterise this hot dog stand: Punched, back-lit lettering in coloured stainless steel sheet spells out what visitors can buy here.



The clear geometric structure is not disfigured by the technology for kitchen equipment, ventilation, heating and cooling that is usually evident at such stands: all is hidden from view. Even the containers for waste separation are neatly integrated into the stand envelope. The roof rests on three corner posts, extending outwards over a glazed corner to give shelter around the counter area. Overall there is great clarity and simplicity in the design, evident in the frameless glass for the inset windows and for the canopies (the latter slotted into the façade rather than suspended from above). Stainless steel sheet (EN 1.4401) with a rolled pattern was used for the façade cladding. Its pale brown colour is not a coating but was achieved instead through electrolytic colouring. This electrochemical process increases the thickness of the inert chromium oxide layer on the surface of the stainless steel. The interference effects come from a combination of the light falling on the surface and the light reflected from it. The colour perceived is dependent on the thickness of the layer and the angle of incident light – it can be anything on a scale from bronze and dark brown to gold, red, purple and even blue or green. The changing colours allow the hot dog stand to blend in with the surrounding façades.





Floor plan · Section through hot dog stand at the Prater
scale 1:100



The hot dog stand at Vienna's Prater Park attracts all kinds of people day and night – from tourists to taxi drivers and night owls.

Shortly after the hot dog stand on Albertinaplatz was opened, the operator decided to open another one elsewhere, near the Prater amusement park. Keeping the corporate identity, the design was adapted for the new location. Certain details were revised both in terms of aesthetics and function: the glass corner became rounded and the fixing points for the glass canopies are entirely concealed in the façades.

And because the new location allowed for a brighter look, the stand was coloured green. A choice that goes well with the colourful

rides at this popular amusement park and against a background of tree-lined avenues. The same material and surface finish were used here: patterned rolled stainless steel, shimmering in shades of olive green changing to purple and pale turquoise, depending on the angle of the light.



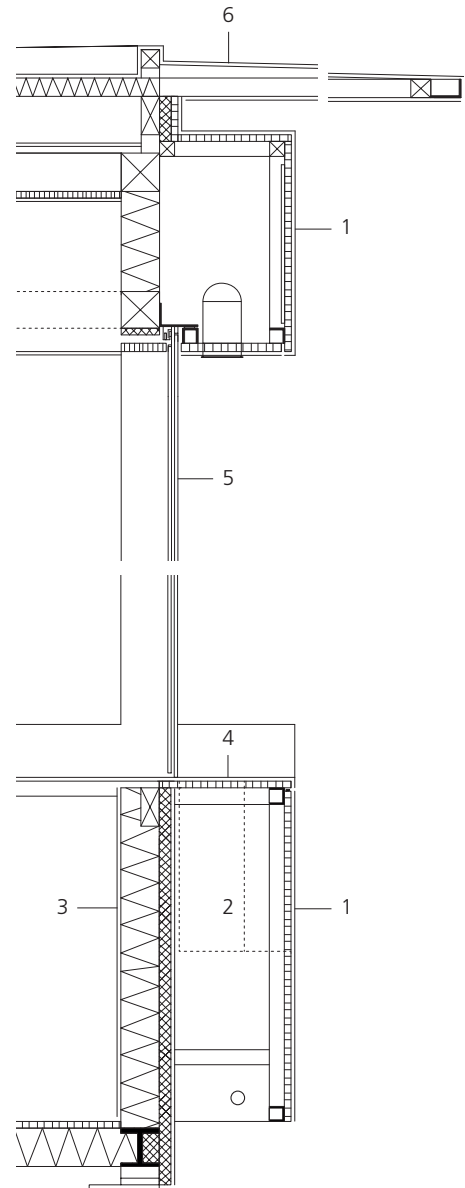
A range of other products are presented in illuminated windows and display cases.

HOT DOG STANDS IN VIENNA



Sectional detail scale 1:20

- 1 Cladding
0.8 mm stainless steel sheet, EN 1.4401, electrolytically coloured green and pattern rolled, bonded to 22 mm backing board
- 2 Waste bin
- 3 Wall
1 mm stainless steel sheet, EN 1.4301, 100/100 mm steel frame with 100 mm thermal insulation, 30 mm rigid foam insulation, 1 mm stainless steel sheet, EN 1.4301
- 4 Counter
1 mm stainless steel sheet, EN 1.4301, satin finish, bonded to 22 mm backing board
- 5 All-glass sliding window, laminated safety glass
- 6 Canopy
1 mm stainless steel sheet, EN 1.4301, laid to falls with separation layer, 70/70 mm steel frame, separation layer, 0.8 mm stainless steel sheet, EN 1.4401, satin finish



Euro Inox
 Diamant Building, Bd. A. Reyers 80,
 1030 Brussels, Belgium
 Tel. +32 2 706 82 67
 Fax +32 2 706 82 69
 E-mail info@euro-inox.org
 Internet www.euro-inox.org

Client: J.Bitzyger GmbH, Vienna
 Architects: Schuberth und Schuberth, Vienna
 Text and layout: Martina Helzel, circa drei, Munich
 Translation: Ingrid Taylor, Munich
 Photos: Franco Winter

