

## Membership

### Welcome to (in 2007):

**General Moly Inc** is a molybdenum exploration and development company in the USA focused on the development of the Mt Hope and Hall-Tonopah moly deposits, located in Nevada.

**David J Joseph Co**, a US company, brokers a complete line of ferro-alloys and specialty pig iron products. The group's customers are steel mills and foundries.

**KTC Korea Co Ltd**, a Korean company, trading molybdenum, with its own Kwangyang Ferroalloy Roasting Plant.

**Philips Advanced Metal Solutions**, a Belgian company, is a specialist in the production of tungsten and molybdenum components for a wide range of applications and industries, including aerospace, automotive, health, electronics, music, nuclear and chemical industries.

### and in 2008,

**Galway Resources Ltd**, a US Company, which is advancing the Victorio Molybdenum/ Tungsten project located in South-West New Mexico. The deposit contains over 200 million pounds of both Tungsten and Molybdenum.

*The IMOA website has been re-structured and readers are strongly recommended to renew their acquaintance with*

[www.imoa.info](http://www.imoa.info)

Molybdenum is a part of life, being an essential trace element in humans, animals and plants, and a part also of our lives. Extensive information about "Moly's" sources and markets, applications, benefits and characteristics is presented on this website.

## 19<sup>th</sup> Annual General Meeting

Hosted generously and efficiently by Climax Molybdenum Company in the "mile high city" of Denver, 180 delegates were welcomed by David Thornton, President both of Climax and IMOA, beginning with dinner at The Fort (where the photos were taken).

Thornton noted that Denver had the thinnest and fittest population in the USA, despite the largest number of microbreweries per capita and said that the next altitude test would face those 100 delegates visiting the Henderson Mine which was two miles high.



David Thornton (left), President of Climax Molybdenum and IMOA with Mario Vinageras, Vice-President Commercial of Southern Copper Corp



Mark Smith (right), President of Chevron Mining, with Jack Goth, formerly Senior Executive Vice-President of Amax

Addressing IMOA's extensive work programme at the AGM the next day, he praised the work of the HSE Committee in providing a pool of data and information on moly to enable the industry to face the global challenges concerning moly exposure. Similarly, the Association's market development programme continued to offer an education in the benefits and applications of moly, leading to increased demand.

In the context of HSE, the Association's initiative to form a Consortium to assist industry to implement REACH legislation which had come into force in June had not only attracted an immediate and positive response, but its progress was also ahead of most other metal industries.

In general, Thornton remarked that membership had increased by 25% to 70 companies in 2007 and that he was proud of the solidly structured and financed organisation which would remain when he retired as President.

After thanking his fellow members on the Executive Committee, members of the HSE and MD Committees, all IMOA members and staff for their support during his 2-year term of office, Thornton paid tribute to two long-serving members of the Executive Committee who were resigning.

Dick De Cesare was retiring from Thompson Creek Metals and from the industry in which he had figured so prominently for 40 years. He was a key player behind the foundation of IMOA although he did not join the Executive Committee until 1995. He served as President from 1998 through 2001 – for two terms, as the careful plans for succession failed for the first time – and his leadership and insights into the many challenges facing IMOA would be greatly missed.

John Graell joined Molymet in 1983 and the Executive Committee in 1996, serving as President from (continued over)

2002 through 2005, again a two-term stint for the same reason. He initiated a Strategic Plan for IMOA – a two-day session for the Executive Committee in Boston conducted by MIT Professor Arnoldo Hax – which is regularly reviewed. Hopefully John would attend future AGMs from time to time in his continuing capacity as Executive President of Molybdenum.

Lastly, Thornton expressed appreciation to Chevron Mining (formerly Molycorp) for offering to host a dinner at the Denver Art Museum.

The quality of the following presentations and the magnetism of the speakers ensured a crowded meeting room at all times:

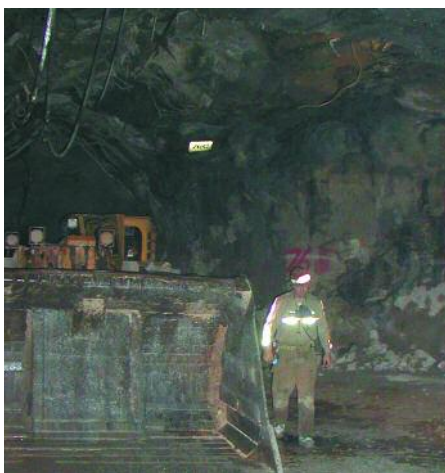
- "An Anecdotal History of Climax in Colorado" by Mr Jack Goth, formerly Senior Executive Vice-President of Amax.
- "Moly Market - an Update" by Mr Terry Adams, Managing Director, Adams Metals Ltd.
- "Long Term Trends, Cycles, and Super Cycles in Metals Prices" by Dr John Cuddington, Coulter Professor of Mineral Economics at the Colorado School of Mines.
- "An Overview of Superalloy Compositions and Comparative Data and Examples of Applications" by Mr Lee Flower, Marketing Manager, Haynes International.

HSE Issues, including plans for the REACH Consortium were addressed by Guido Provoost (Managing Director of Sadaci NV) and Sandra Carey with the HSE Team.

The Market Development Session was led by Nicole Kinsman and focussed on Architecture, Desalination and Structural Uses of Stainless Steel.

## Some Notes on the Henderson Mine

The Henderson Mine is the largest primary moly mine in the world and is located in the Rocky Mountains, 50 miles west of Denver. The construction project was a remarkable feat of engineering because the mill and tailing area were on different sides of the Continental Divide – the mine on the east and the mill fifteen miles away to the west (see photos). First a shaft had to be driven down 3,000ft below the surface on the east, then tunnels were dug from each direction, over a distance long enough to require that the earth's curvature be taken into account, and a conveyor belt installed. Operations began in 1976 and the mine has since produced more than 160 million tonnes of ore and 770 million lbs of moly, according to its website.



*From East.....*



*to West.....*

## And the Climax Mine .....

Speculation that there were plans to reopen the famous Climax Mine in Leadville -located at a height marginally greater than Henderson and the first commercial supplier of moly back in 1918 but last operated in 1995 - proved correct, when Freeport - McMoRan Copper and Gold, the owner of both the Henderson and Climax Mines, announced in December their intention to restart the open-pit mine and milling facilities in 2010.

## Molybdenum REACH Consortium

The Molybdenum REACH Consortium, initiated by IMOA, is up and running successfully and the first meetings took place in London on 19 December.

There are currently 38 members (see the website –

[www.molybdenumconsortium.org](http://www.molybdenumconsortium.org)

for a complete list), with other companies expressing interest as the deadline was extended to 31 January 2008 and the minimum fee reduced to US\$15,000.

The Consortium Secretariat's principal efforts in 2008 will be assisting members to pre-register; setting priorities for an extensive research programme of laboratory tests to generate the necessary data to conduct risk assessments on the substances covered by the Consortium Agreement; and organising Lead Registrants

## Elections and Appointments:

*As President in 2008 and 2009*

**Victor Pérez**, Marketing Director of Codelco, in succession to **David Thornton**.

*To the Executive Committee:*

**Duan Yuxian**, Chairman, China Molybdenum Co Ltd

**Carlos Letelier**, Operations Vice President, Molybdenum SA, in succession to **John Graell**

**Mark Wilson**, Vice President of Sales and Marketing, Thompson Creek Metals Co, in succession to **Richard De Cesare**

Catherine Houska, IMOA's consultant for stainless steel in architecture, building and construction (ABC) and Dr. Gary Carinci, IMOA's consultant for stainless steel use in drinking water and desalination are reporting here on some recent developments in their work areas. With the help of Catherine and Gary, IMOA is providing decision makers with the information necessary to understand corrosion problems and to justify the use of higher performance Mo-containing stainless steels.

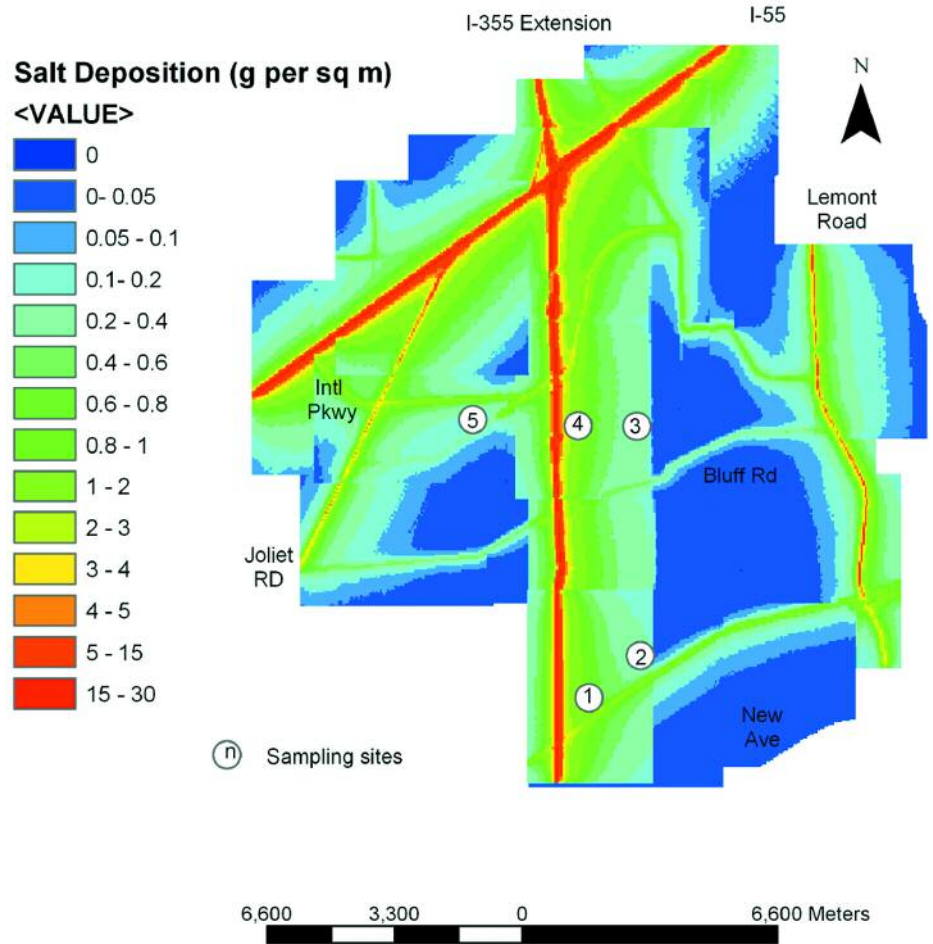
# Stainless Steel Helps Prevent Deicing Salt Corrosion.

By Catherine Houska, TMR Stainless, Pittsburgh PA, consultant to IMOA

Road deicing salt has been used since the 1960's to prevent commerce disruption and accidents in cities with regular winter snow (e.g. Düsseldorf and Chicago) or freezing rain exposure (e.g. Beijing or Dallas). Total deicing salt tonnage has continued to increase worldwide and corrosion damage is not limited to highways and vehicles. Building material corrosion and premature failure is a significant and growing problem.

Road salt mists are formed as the tires of moving vehicles spray tiny particles of salt water or dry salt particles into the air. Hundreds of deicing salt studies have been done but most focused on areas close to roadways. New US research has documented seasonal deicing salt accumulations as much as 1.9 km (1.2 miles) downwind of a major highway outside of Chicago. The researchers collected data between 1997 and 2004 and produced a model (Figure 1) covering a 5 x 5-km (3.1 x 3.1-mi) area.<sup>1</sup> It shows that sites within 100 m (328 ft) of busy roadways can be comparable to moderate to severe coastal areas.

The researchers theorized that urban areas with busy roadways might have regional deicing salt plumes or mists for several days after a snow event. This increases total salt accumulation on buildings. In Chicago, deicing salt-related metal corrosion has been found up to the 60th floor of one tall building.<sup>2</sup> Exposure levels are likely to be similar in any major city with regular winter snow exposure.



**Figure 1:** Model projection of annual deicing salt deposition around highways I-55 and I-355 and small surface roads with the spacing of some test sites shown. Illinois Department of Transportation (DOT) in collaboration with Argonne National Laboratory (ANL) and the U.S. National Atmospheric Deposition Program/National Trends Network (NADP/NTN)

Internationally, it is estimated that over 60 million metric tons (66 million tons) of salt are used for deicing.<sup>3</sup> China, which previously used very little deicing salt, has had a considerable increase in usage and recently became the world's largest producer.

In the US, about 70% of the roads and population areas receive at least 13 cm (5 inches) of snow annually and additional areas are affected by seasonal freezing rain. In recent years, the United States used 13.6 to 18 million metric tons (15 to 20 million tons) of deicing salt per year and Canada used another 3.6 to 4.5 million metric tons (4 to 5 million tons).<sup>4</sup>

**Table 1:**

Road and bridge snow and ice control procedures in countries that participated in a 2002 European study of Winter maintenance practices<sup>3</sup>

Country	Deicing Products Used	Tons (1,000)	Deicing Period
Austria	NaCl, CaCl <sub>2</sub>	NA	Nov. - March
Belgium	NaCl, CaCl <sub>2</sub>	113	Oct. - April
Croatia	NaCl	NA	NA
Czech Republic	NaCl, CaCl <sub>2</sub> , MgCl <sub>2</sub>	215	Nov. - April
Denmark	NaCl	115	Oct. - April
Finland	NaCl	NA	Oct. - April
France	NaCl, CaCl <sub>2</sub>	400 – 1,400	Nov. - March
Germany	NaCl, CaCl <sub>2</sub> , MgCl <sub>2</sub>	2,000	Nov. - March
Great Britain	NaCl, CaCl <sub>2</sub>	2,200	
Hungary	NaCl, CaCl <sub>2</sub>	NA	Nov. - March
Iceland	NaCl, CaCl <sub>2</sub>	NA	Oct. - April
Ireland	NaCl	30 - 70	Nov. - April
Norway	NaCl	83	Oct. - April
Poland	No details	NA	NA
Romania	NaCl	108	Nov. - March
Slovenia	NaCl, CaCl <sub>2</sub> , MgCl <sub>2</sub>	NA	NA
Spain	NaCl, CaCl <sub>2</sub>	80	Oct. - April
Sweden	NaCl	300	Oct. - April
Switzerland	NaCl, CaCl <sub>2</sub>	NA	Oct. - April
The Netherlands	NaCl, CaCl <sub>2</sub>	135	Oct. - April

NA – total tonnage data not available

The most comprehensive European study was done in 2002 when twenty countries participated in a task group that studied deicing practices. **Table 1** summarizes the deicing methods used in each country, and, where available, the annual tonnage. It is evident from this and other data sources that deicing is standard practice throughout Europe.

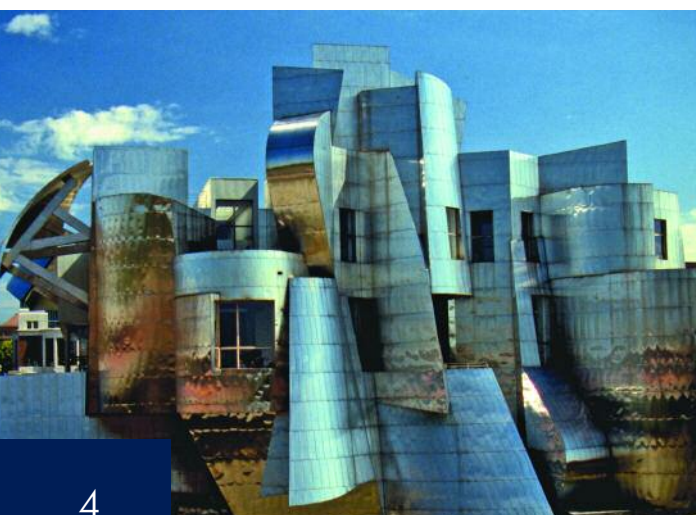
Unfortunately, many designers are not aware that deicing salt is very corrosive to architectural materials, and inadequate knowledge can lead to inappropriate material selection and premature failure. Molybdenum-containing stainless steels are often a cost-effective choice when long-term performance, aesthetics, security, and/or minimal maintenance are important because the molybdenum alloying addition improves resistance to chloride (salt) corrosion.

Many Europeans incorrectly assume that their deicing salt use is quite minimal, but it is actually similar to North American use. Deicing salt tonnage is increasing in both regions. For example, the salt industry association, Verband der Kali- und Salzindustrie e.V., reported that over 3 million metric tons of deicing salt were used on German roads during both 2005 and 2006, which is a 50% increase since 2002.<sup>5</sup>

Type 316 stainless steel (with 2% molybdenum) with a smooth finish is preferred for many applications exposed to deicing salt. In applications with very high salt exposure levels (i.e. embedded sidewalk lighting and entrance gratings) and areas regularly exposed to salt water splashing, a more corrosion resistant stainless steel or regular cleaning may be necessary. Stainless steels with higher molybdenum contents, like Types 2205, 317LMN, and 904L, are generally sufficient for these

seasonal high deicing salt exposure applications.

The Type 316 stainless steel exterior of Frank Gehry's Weisman Art Museum (**Figure 2**) illustrates that success is readily achievable when an appropriate stainless steel is selected, while **Figure 3** shows unacceptable staining on a Type 304 stainless steel panel with less significant deicing salt exposure.



**Figure 2:**

*The Frederick R Weisman Art Museum has a smooth No. 4 finish on its Type 316 stainless steel exterior and is easily rain-washed. Despite five-year gaps between cleanings, no corrosion staining is evident but there is some dirt accumulation.*

*photo: Nickel Institute*

**Figure 3:**

*This Type 304 panel is on the second floor of a building in downtown Pittsburgh. Although it is cleaned more frequently than the building in Figure 2, it is exhibiting significant deicing salt corrosion staining.*

*Photo: Catherine Houska*



**Figure 4:**

*Severe deicing salt corrosion has caused perforation of this aluminum door threshold. Photo: Catherine Houska*



**Figure 5:**

*Deicing salt corrosion of charcoal grey anodized aluminum panels on the second floor of an office building lead to permanent surface damage. Photo: Catherine Houska*

To avoid problems, specifiers must be made aware of the severity of the deicing salt problem, comparative metal corrosion rates, and common deicing myths. This makes it necessary to provide information on both stainless

steel selection and the relative performance of competitive architectural metals.

For example, there is a common misconception among architects that aluminum's corrosion resistance is similar to that of stainless steel. This is incorrect. In locations that are exposed to chlorides (coastal or deicing salt), the corrosion rate of aluminum is typically 10 to 100 times that of stainless steel. The white to grayish white color of aluminum corrosion product may not bring attention to the problem (as the rusting red of steel does), until permanent aesthetic or structural damage has been done. This lack of knowledge makes aluminum a common replacement for stainless steel when construction costs must be reduced. **Figures 4** and **5** show severe aluminum corrosion in a deicing salt laden environment and provide a significant contrast to **Figure 2**.

International "sustainable" design trends have made the specification of long lasting materials even more important. Most of the world's major population centers are exposed to coastal or deicing salt or both. IMOA has developed and posted a new web article on the international impact of deicing salt (see [www.imoa.info](http://www.imoa.info)). It contains the information shared in this article as well as a more in-depth discussion of the relative performance of competitive materials. IMOA is providing decision makers with the information necessary to understand the problem and justify the use of high performance Mo-containing stainless steels.

## Notes

1. Allen L. Williams and Gary J. Stensland, "Atmospheric Dispersion Study of Deicing Salt Applied to Roads," Part II Final Report For Period July 2002 to June 2004, in the January 2006 issue of Physical Research Report No. 140, Illinois Department of Transportation.
2. Catherine Houska, "Which Stainless Steel Should Be Specified for Exterior Applications?", International Molybdenum Association, architecture, building and construction series
3. European Task Force TG3, 'Snow and Ice Control on European Roads and Bridges', August 2002
4. Salt Institute, [www.saltinstitute.org](http://www.saltinstitute.org).
5. The European Salt Company, [www.esco-salt.com](http://www.esco-salt.com)

# Molybdenum-Bearing Duplex Stainless Steel – The Optimal Material for Desalination

By Dr. Gary Carinci, TMR Stainless, Pittsburgh PA, consultant to IMO A

## Multistage Flash Distillation

Distillation technologies which use natural gas or oil fired boiler units are typical in the Middle East because of the low cost of energy in the region. These technologies involve highly corrosive operating environments because of the high salinity and elevated operating temperatures. In multistage flash distillation plants, heated seawater boils rapidly (flash) when the pressure of the vapor is reduced rapidly below the vapor pressure of the liquid at that temperature. Part of this brine flashes into vapor and is condensed on an overhead tube bundle, forming distilled water. The water is collected in a trough mounted below the tube bundle and forms the end product fresh water (Figure 1).

## Multiple Effect Distillation

Multiple effect distillation plants use horizontal tube bundles, where steam is condensed on one side of a tube with heat transfer causing evaporation of seawater on the other side. Steam introduced into the first, highest temperature effect is condensed inside the tubes, and the heat thereby released causes a nearly equal amount of vapor to be evaporated from the feed water on the outside of the tubes. The vapor produced in the

## Introduction

Water is the most abundant resource on Earth and all life depends on it; however, only one percent of it is available as freshwater. This amount is unevenly distributed, and many arid areas such as the Middle East suffer from alarming shortages where a liter of drinking water is more costly than a liter of gasoline. Desalination is one of the main ways to solve water shortages where energy is readily available. The global water desalination market has been growing at a compound average rate of 12% a year for the past five years, according to *Desalination Markets*, published by *Global Water Intelligence*. With massive projects such as the 800,000 m<sup>3</sup>/day independent water and power plant at Jubail Industrial City in Saudi Arabia still to come, there are no signs that the market is slowing down.

Desalination is a process in which dissolved minerals including salt are removed from seawater, brackish water, or treated wastewater. The major technologies available for desalination include distillation and membrane technologies. Distillation is a thermal process

in which feed water is heated and then evaporated to separate out dissolved minerals. The most common methods of distillation include multistage flash (MSF) and multiple effect distillation (MED). In membrane processes such as reverse osmosis, feed water is pumped at high pressure through permeable membranes, which separate the salts from the water.

Today the Middle East is the main region where desalination is widely used, with more than half of the total world capacity. Most of the region is below the level of adequate freshwater supplies as defined by the World Health Organization, and the United Arab Emirates, Kuwait, Bahrain and Qatar depend solely on desalination for freshwater. Saudi Arabia is now the world's largest producer of desalinated water with desalination meeting 70% of the country's present drinking water needs and with major urban and industrial centers supplied through a network of water pipes that run for more than 3,700 kilometers. Several new desalination plants are planned, or under construction, which will ultimately bring the total to approximately 40 such facilities.

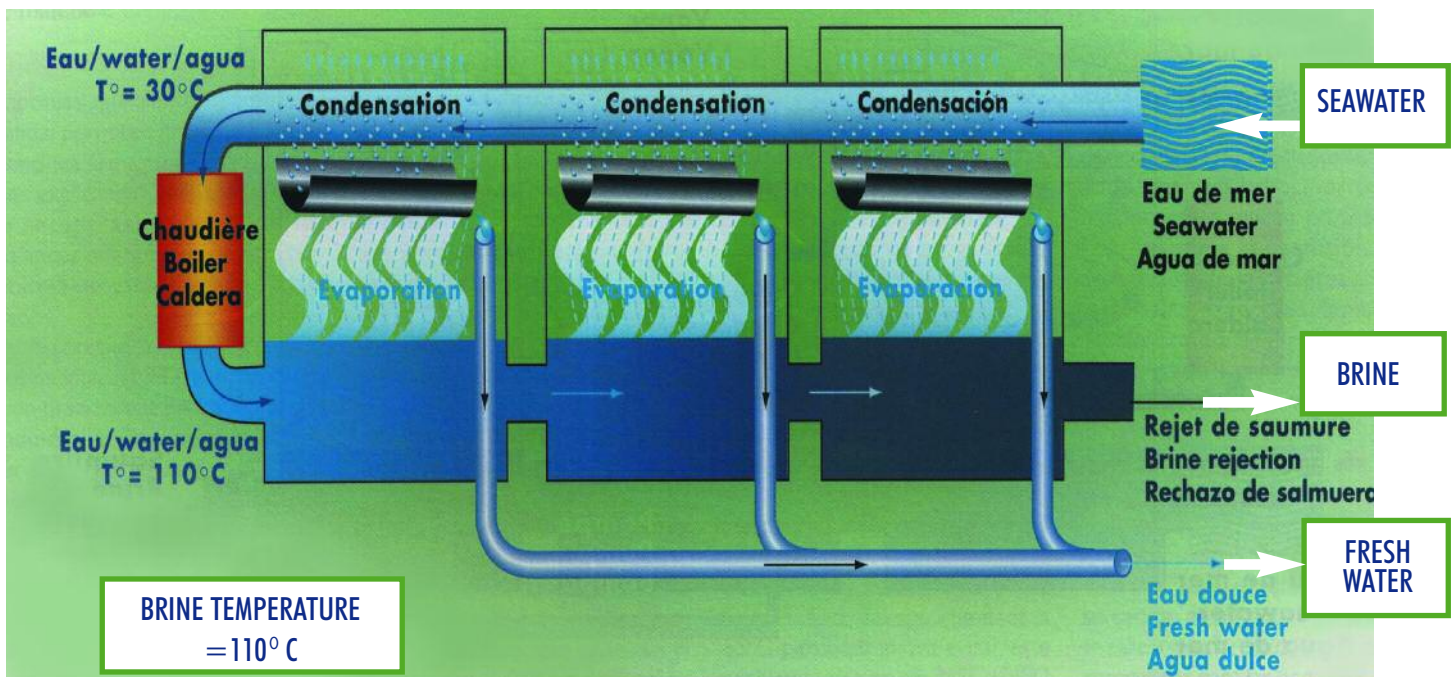
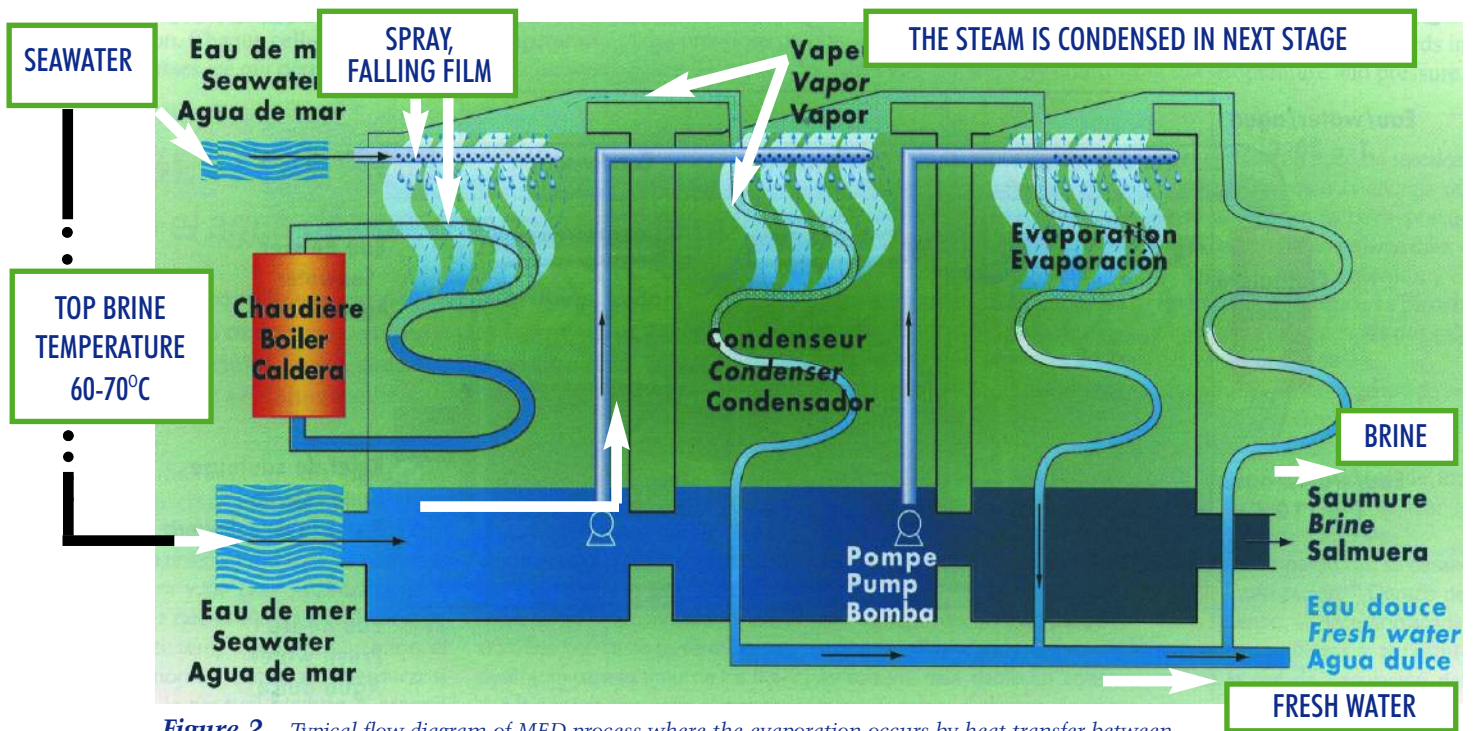


Figure 1. Typical flow diagram of MSF process where the water is pre-heated in each stage and evaporation takes place in each stage due to vacuum pressure in each flash chamber.



**Figure 2.** Typical flow diagram of MED process where the evaporation occurs by heat transfer between condensing vapor on one side and evaporating brine on the other side of the heat exchanger tubes.

first effect is, in turn, condensed in the second effect, again evaporating a portion of the brine feed water. “Multiple effect” distillation uses more than one boiling chamber or “effect” to produce distilled water (Figure 2). The lower brine temperatures in this process, compared with the MSF process, result in a less corrosive environment and lower alloyed stainless steels can be used in the construction of MED evaporators. With multiple effect technology, the heat energy contained in the steam generated in the first boiling chamber is reused to boil more water in subsequent boiling chambers. This recycling of energy provides the energy saving feature of multiple effect distillation, which has made this technology an ideal solution for addressing the normally large energy consumption required for desalinating seawater.

## Materials

The earliest thermal desalination plants were built using mild steel, but corrosion was a significant problem and later evaporators were built using carbon steel clad with 316L (UNS S31603) stainless steel. Lately duplex stainless steels such as 2205 (UNS S32205) and lean duplex stainless steels have emerged as the optimal grades for desalination plants because of their high corrosion resistance and mechanical strength (Table 1). Many recent evaporators in the Middle East have been constructed using either 2205 duplex

stainless steel or dual duplex construction using 2205 stainless steel in combination with a lean duplex stainless steel for lower temperature MED evaporators. By utilizing the higher mechanical properties of duplex stainless steel, the thickness and weight of the evaporator vessel can in many cases be reduced by as much as 30% compared to austenitic stainless steel or carbon steel construction. Duplex stainless steel evaporators, require less material, less welding and can therefore, be built at lower cost than alternate corrosion resistant materials (Figure 3). Further benefits of lightweight construction with duplex stainless steel include easier handling and lower environmental impact.

With the global desalination capacity growth predicted at 14% per year and 25 million m<sup>3</sup>/day growth forecasted for the Persian Gulf desalination market through 2015 (Global Water Intelligence), this development in the Gulf alone will require approximately 275,000 metric tons of duplex stainless steel. Assuming all the evaporator construction is completed using 2205 duplex stainless steel, over 9,000 metric tons of molybdenum will be required for the Persian Gulf desalination projects. The thermal desalination expansion in the Middle East using MED and MSF technologies will provide an important market for molybdenum-bearing duplex stainless steels.



**Figure 3:** As-fabricated duplex stainless steel evaporator (Abu Dhabi, UAE)

Grade	UNS	EN	C (max)	Cr	Ni	Mo	N	Yield, min (MPa)	Tensile, min (MPa)
316L	S31603	1.4404	0.03	17	11	2.1		170	485
2205	S32205	1.4462	0.03	22	5	3.3	0.16	450	655

**Table 1:** Stainless steels used in thermal desalination plants (nominal composition in weight %, balance iron)

**AUSTRALIA**  
**Moly Mines Ltd**  
46-50 Kings Park Road, West Perth, WA 6005, AUSTRALIA  
Tel: +61 8 9429 3300; Fax: +61 8 9429 3399  
Email: info@molymines.com Website: www.molymines.com

**AUSTRIA**  
**Interallloys Trading & Business Consulting GmbH**  
Floragasse 7, A1040 Vienna, AUSTRIA  
Tel: +43 1 504 6138; Fax: +43 1 504 6192  
Email: interal@ycn.com

**Plansee SE**  
6600 Reutte, AUSTRIA  
Tel: +43 5672 6000; Fax: +43 5672 600 500  
Email: info@plansee.com Website: www.plansee.com

**Treibacher Industrie AG**  
Auer-von-Welsbach, Strasse 1, 9330 Althofen, AUSTRIA  
Tel: +43 4262 505; Fax: +43 4262 505 8416  
Email: ferdinand.kampl@treibacher.com  
Website: www.treibacher.com

**BELGIUM**  
**Philips Advanced Metal Solutions**  
Steenweg op Gierle 417, B-2300 Turnhout, BELGIUM  
Tel: +32 14 401 288; Fax: +32 14 401 658  
Email: jacky.boonen@philips.com Website: Philips.com/ams

**Sadaci NV**  
Langerbruggekaai 13, 89000 Gent, BELGIUM.  
Tel: +32 92 540 511; Fax: +32 92 540 571  
Email: daisy.segeant@sadaci.be Website: www.sadaci.be

**CANADA**  
**Oriental Minerals Inc**  
24th Floor, 1111 West Georgia Street, Vancouver, BC, V6E 4M3, CANADA  
Tel: +1 604 681 5755; Fax: +1 604 684 2990  
Email: info@orientalminerals.com  
Website: www.orientalminerals.com

**CHILE**  
**Codelco Chile**  
Huerfanas 1270, Santiago, CHILE  
Tel: +56 2 690 3406; Fax: +56 2 690 3366  
Email: vperez@codelco.cl Website: www.codelco.cl

**Estudios Antofagasta Copper Ltda**  
Ahumada 11, Oficina 613, Santiago, CHILE  
Tel: +56 2 377 5000; Fax: +56 2 377 5096  
Email: gsanchez@aminerals.cl  
Website: www.antofagasta.co.uk

**Molibdenos y Metales SA**  
Huerfanas 812, 6th Floor, Santiago, CHILE  
Tel: +56 2 368 3600; Fax: +56 2 368 3653  
Email: info@molymet.cl; Website: www.molymet.cl

**CHINA**  
**Chaoyang Jinda Molybdenum Co Ltd**  
No 788 Section 4, Longshan Street, Chaoyang, Liaoning, 122000, CHINA  
Tel: +86 421 297 6888; Fax: +86 421 297 6666  
Email: jindamolybdenum@163.com  
Website: www.jindamoly.com

**China Molybdenum Co Ltd**  
374 Junshan West Road, Luanchuan County, Luoyang, Henan 471500, CHINA  
Tel: +86 379 6681 9855; Fax: +86 379 6681 9885  
Email: liuyh@chinamoly.com  
Website: http://www.chinamoly.com

**Grand Build Metal International Co Ltd**  
1002B East Ocean Centre, 98 Granville Road, Kowloon, Hong Kong, CHINA  
Tel: +852 3542 5659; Fax: +852 3542 5655  
Email: grandbuild@grandbuild.com.hk

**Huludao Hongda Moly Co Ltd**  
9 Haifei Road, Qibu District, Longgang Development Zone, Huludao, Liaoning, CHINA  
Tel: +86 429 858 6666; Fax: +86 429 213 9888  
Email: dreamliang@263.net Website: www.hongdamoly.com

**Jiangsu Fengfeng Tungsten and Molybdenum Materials Co Ltd**  
Tang Jia Se, The Northern Suburbs of Dongtai, Jiangsu 224200, CHINA  
Tel: +86 515 527 3311; Fax: +86 515 527 1237  
Email: djppaa@126.com; Website: www.fengfeng.com.cn

**Jinduicheng Molybdenum Co Ltd**  
17th Floor, Jie Rui Mansion, 5 West section of the 2nd South Ring Road, Xian, Shaanxi 710068, CHINA  
Tel: +86 29 8837 8676; Fax: +86 29 8837 8771  
Email: jck@jdc.com.cn; Website: www.jdcmmc.com

**DENMARK**  
**Haldor Topsoe A/S**  
Nymøllevej 55, DK-2800 Lyngby, DENMARK  
Tel: +45 4527 2000; Fax: +45 4527 2999  
Email: catalyst@topsoe.dk Website: www.topsoe.com

**FRANCE**  
**Ampere Alloys**  
12 Mail Joliot Curie, Saint Ouen L'Automne (95), 95310 FRANCE  
Tel: +33 1 34 32 4007; Fax: +33 1 30 37 0584  
Email: f.celrier@amperealloys.com

**Arcelor Mittal Purchasing**  
5 Rue Luigi Cherubini, 93212 La Plaine Saint-Denis Cedex, FRANCE  
Tel: +32 2 533 3613; Fax: +32 2 533 3601  
Email: carl.landuydt@purchasing.arcelor.com  
Website: www.arcelor.com

**GERMANY**  
**CM ChemieMetall GmbH Bitterfeld**  
ChemiePark Bitterfeld-Wolfen, Areal E, Niels-Bohr-Straße 5, D-06749 Bitterfeld, GERMANY  
Tel: +49 3493 604 000; Fax: +49 3493 604 001  
Email: info@chemiemetall.de  
Website: www.chemiemetall.de

**GfM Fesil GmbH**  
Schifferstrasse 200, D-47059 Duisburg, GERMANY  
Tel: +49 203 300 070; Fax: +49 203 3000 7110  
Email: info@gfm-fesil.de Website: www.gfm-fesil.de

**Grundmet Metall-und Rohstoffvertriebs GmbH**  
Lugdelee 55, 40545 Düsseldorf Oberkassel, GERMANY  
Tel: +49 211 577 250; Fax: +49 211 577 2555  
Email: info@grundmet.de Website: www.grundmet.de

**FW Hempel Metallurgical GmbH**  
Leopoldstr. 16, D40211 Düsseldorf, GERMANY  
Tel: +49 211 168 060; Fax: +49 211 168 0648  
Email: info@metallurgical.de Website: www.metallurgical.de

**Metherma GmbH**  
Arnheimer Str. 103, D40489 Düsseldorf, GERMANY  
Tel: +49 211 40 80 840; Fax: +49 211 40 71 26  
Email: molybdenum@metherma.de

**HC Starck GmbH**  
Im Schleeke 78 91, D38642 Goslar, GERMANY  
Tel: +49 5321 7510; Fax: +49 5321 751 6192  
Email: info@hstarck.com Website: www.hcstarck.com

**IRAN**  
**Pars Molybden Co**  
No 46 Bahar Alley, South Shiraz St Molla Sadra Ave, 14358 Tehran, IRAN  
Tel: +98 21 806 3917; Fax: +98 21 806 1476  
Email: info@parsmolybden.com

**ISRAEL**  
**Commodity Resources Inc**  
Dor Dor V'Dorshav 4, Jerusalem 93117, ISRAEL  
Tel: +972 2 561 0658; Fax: +972 2 561 0660  
Email: jdm@atglobal.net

**Metal-Tech Ltd**  
Ramat Hovav, PO Box 2412, Beer-Sheva 84874, ISRAEL  
Tel: +972 8 657 2333; Fax: +972 8 657 2334  
Email: general@metal-tech.co.il Website: www.metal-tech.co.il

**KOREA**  
**KTC Korea Co Ltd**  
KTC Youngsang Building 567-49, Yeonnam-Dong, Mapo-Gu, Seoul, KOREA  
Tel: +82 2 2068 6555; Fax: +82 2 2068 7076  
Email: moly@ktckorea.com Website: www.ktckorea.com

**JAPAN**  
**Kohsei Co Ltd**  
Kohsei Building, 2-11 Kobuncho Nihonbashi Chuoku, 103-0024 Tokyo, JAPAN  
Tel: +81 3 5652 0901; Fax: +81 3 5652 0905  
Email: tribu@kohsei.co.jp Website: www.kohsei.co.jp

**Mitsubishi Corp**  
16-3 Konan 2-chome, Minato-ku, Tokyo 108-8228, JAPAN  
Tel: +81 3 6405 3273; Fax: +81 3 64058871  
Email: yuji.fukumoto@mitsubishicorp.com  
Website: www.mitsubishicorp.com

**Sojitz Corp**  
Ferroalloys Section 1, Iron Ore and Ferroalloys Dept 1-20 Akasaka 6-chome, Minato-ku, Tokyo 107-8655, JAPAN  
Tel: +81 3 5520 3529; Fax: +81 3 5520 3517  
Email: matsumura.hiroshi@sojitz.com  
Website: www.sojitz.com

**Taiyo Koko Co Ltd**  
31, 3chome Marunouchi, Chiyodaku, Tokyo 1000005, JAPAN  
Tel: +81 3 3216 6041; Fax: +81 3 3216 6045  
Email: trade@taiyokoko.co.jp

**KAZAKHSTAN**  
**ZAKA Mining LLC**  
050043, Koshek Batyr, 5, Almaty, KAZAKHSTAN  
Tel: +7 327 226 6820; Fax: +7 327 226 6823  
Email: info@dalamining.kz

**LUXEMBOURG**  
**Traxys Europe SA**  
3 rue Pletzer, Centre Hellett, L-8080 Bertrange, LUXEMBOURG  
Tel: +352 45 99 991; Fax: +352 45 999 9223  
Email: heinz.duechting@traxys.com

**MEXICO**  
**Mexicana de Cobre SA de CV**  
Av Baja California 200, Col. Roma Sur, 06760 Mexico DF, MEXICO  
Tel: +52 555 264 7775; Fax: +52 555 264 7769  
Email: archibaldo.deneken@mm.gmexico.com  
Website: www.gmexico.com

**Molymex SA de CV**  
Tehuantepec No 90 Col. Centenario, Hermosillo, Sonora 83260, MEXICO  
Tel: +52 662 289 3640; Fax: +52 662 289 3650  
Email: administracion@molymex.com.mx  
Website: www.molymex.com.mx

**PERU**  
**Southern Copper Corporation**  
Av Caminos del Inca 171 Characilla del Estanque, Surco, Lima 33, PERU  
Tel: +51 1 512 3330; Fax: +51 1 217 1351  
Email: jdlheros@southernperu.com.pe  
Website: www.southernperu.com

**RUSSIA**  
**Baltic Enterprise Ltd**  
40, The 17th Line, VO, Saint-Petersburg, 199178, RUSSIA  
Tel: +7 812 325 8688; Fax: +7 812 325 8687  
Email: bm@sol.ru Website: www.sol.ru

**JSC Polema Corp**  
Przhevalskogo Str 3, Tula, 300016, RUSSIA  
Tel: +7 095 633 1177; Fax: +7 095 633 1527  
Email: polema@methoding.com Website: www.polema.ru

**SWEDEN**  
**AB Ferrolegering**  
PO Box 71 63, Sveavägen 9, 103 88 Stockholm, SWEDEN  
Tel: +46 8 454 6560; Fax: +46 8 796 0636  
Email: info@ferrolegering.se  
Website: www.ferrolegering.se

**Outokumpu Stainless AB**  
PO Box 74, S-774 22 Avesta, SWEDEN  
Tel: +46 226 810 00; Fax: +46 226 813 05  
Email: info.stainless@outokumpu.com

**Scandinavian Steel AB**  
Birger Jarlgatan 15, SE 111 45 Stockholm, SWEDEN  
Tel: +46 8 614 2850; Fax: +46 8 611 6434  
Email: metals@scandinaviansteel.se

**SWITZERLAND**  
**Cronimet Suisse AG**  
Allmendstrasse 11, CH-6312 Steinhausen, SWITZERLAND  
Tel: +41 41 748 5040; Fax: +41 41 748 4201  
Email: tendoorakatt.fritz@cronimet.ch

**Glencore International AG**  
Baarerstrasse 3, CH-6341 Baar, SWITZERLAND  
Tel: +41 41 709 2000; Fax: +41 41 709 3000  
Email: info@glencore.com Website: www.glencore.com

**UK**  
**Adams Metals Ltd**  
1 Milkhouse Gate, Guildford, Surrey, GU1 3EZ, UK  
Tel: +44 1483 577 900; Fax: +44 1483 578 008  
Toll Free: +1 800 473 8427; Fax: +1 800 473 8428  
Email: info@adamsmetals.com  
Website: www.adamsmetals.com

**Alfred H Knight International Ltd**  
Eccleston Grange, Prescot Road, St Helens, Merseyside WA10 3BQ, UK  
Tel: +44 1744 733757; Fax: +44 1744 27062  
Email: enquiries@ahkgroup.com  
Website: www.ahkgroup.com

**Derek Raphael & Co Ltd**  
8-10 Castle Street, Cirencester, Gloucestershire GL7 1QA, UK  
Tel: +44 1285 885 821; Fax: +44 20 7504 8483  
Email: araphael@derek-raphael.co.uk  
Website: www.derek-raphael.co.uk

**Alex Stewart (Assayers) Ltd**  
Coddick Rd, Knowsley Industrial Estate, Merseyside L34 9ER, UK  
Tel: +44 151 548 7777; Fax: +44 151 548 0714  
Email: enquiries@alexstewart.com  
Website: www.alexstewart.com

**Wogen Resources Ltd**  
4 The Sanctuary, Westminster, London, SW1P 3JS, UK  
Tel: +44 20 7222 2171; Fax: +44 20 7222 5862  
Email: Allan.kerr@wogen.com Website: www.wogen.com

**Wyseway (UK) Ltd**  
Power Road Studios, 114 Power Road, Chiswick, London W4 5PY, UK  
Tel: +44 20 8742 3420; Fax: +44 20 8742 3421  
Email: mail@wyseway.co.uk

**USA**  
**Albemarle Corp**  
451 Florida Street, Baton Rouge, LA 70801, USA  
Tel: +1 225 388 8042; Fax: +1 225 388 7686  
Email: chris\_knight@albemarle.com  
Website: www.albemarle.com

**Barex Resources Inc**  
105B Van Houten Avenue, Passaic Park, NJ 07055-5518, USA  
Tel: +1 973 778 6470; Fax: +1 413 460 7930  
Email: nrs@barexresources.com

**Bear Metallurgical Co**  
679 East Butler Road, Butler, PA 16002, USA  
Tel: +1 724 833 6800; Fax: +1 724 283 6078  
Email: mike.bourgeois@bearmet.com

**The ChemMet Co**  
P O Box 819, Clinton, MD 207350819, USA  
Tel: +1 301 868 3355; Fax: +1 301 868 8946  
Email: afox@chem-metro.com

**Chevron Mining Inc**  
116 Inverness Drive East, Suite 207, Englewood, CO 80112, USA  
Tel: +33 4 7863 7936; Fax: +1 281 276 9317  
Email: gdebeco@chevron.com http://www.molycorp.com

**Climax Molybdenum Co**  
One North Central, Phoenix, AZ 85004, USA  
Tel: +1 602 366 8100; Fax: +1 602 366 7329  
Email: dimax@fmi.com  
Website: www.climaxmolybdenum.com

**Commercial Metals Co**  
2050 Center Avenue, Suite 250, Fort Lee, NJ 07647, USA  
Tel: +1 201 302 0888; Fax: +1 201 302 9911  
Email: jz@cmc.com Website: www.cmc.com

**Comsup Commodities Inc**  
2200 Fletcher Avenue, 7th Floor, Fort Lee, NJ 07024, USA  
Tel: +1 201 947 9400; Fax: +1 201 461 7577  
Email: comsup@comsupinc.com

**Galway Resources Ltd**  
14 Tuxedo Lane, Congers, NY 10920, USA  
Tel: +1 800 475 2412; Fax: +1 775 748 5223  
Email: info@galwayresources.com  
Website: www.galwayresources.com

**General Moly Inc**  
1726 Cole Blvd, Suite 115, Lakewood, CO 80401, USA  
Tel: +1 303 928 8599; Fax: +1 303 928 8598  
Email: info@generalmoly.com  
Website: www.generalmoly.com

**Gulf Chemical & Metallurgical Corp**  
PO Box 2290, Freeport, Texas 77542-2290, USA  
Tel: +1 979 233 7882; Fax: +1 979 233 7171  
Email: kevin.jones@gulfchem.com

**David J Joseph Co**  
Penn Center West Two, Suite 301, Pittsburgh, PA 15276, USA  
Tel: +1 412 788 6791; Fax: +1 412 788 6793  
Email: kqw@djj.com; Website: www.djj.com

**Kennecott Molybdenum Co**  
8315 West 3595 South, PO Box 6001, Magna, Utah 840446001, USA  
Tel: +1 420 7781 1368; Fax: +44 20 7781 1858  
Email: eva.model@riotinto.com

**Osram Sylvania Products Inc**  
Hawes Street, Towanda, PA 18848, USA  
Tel: +1 570 268 5000; Fax: +1 570 268 5113  
Email: susan.dunn@sylvania.com  
Website: www.sylvania.com

**Powmet Inc**  
PO Box 5086, 2625 Sewell Street, Rockford, IL 61125, USA  
Tel: +1 815 398 6900; Fax: +1 815 398 6907  
Email: wct@powmet.com

**Shangxi Minmetals Inc**  
150 N Santa Anita Avenue, Suite 500, Arcadia, CA 91006, USA  
Tel: +1 626 445 8946; Fax: +1 626 445 6943  
Email: georgesong@sxmin.com

**Sheng Tong Enterprises (USA) Corp**  
17870 Castleton Street, Suite 240, City of Industry, CA 91748, USA  
Tel: +1 626 581 7105; Fax: +1 626 581 7195  
Email: jiwiejia@risingst.com Website: www.risingst.com

**Joe H Smith Co Ltd**  
PO Box 837, Cypress, TX 77410, USA  
Tel: +1 281 469 7110; Fax: +1 281 890 6541  
Email: khsmitth@sbglab.net

**Thompson Creek Metals Co**  
945 West Kenyon Avenue, Englewood, CO 80110-3469, USA  
Tel: +1 303 761 8801; Fax: +1 303 761 7420  
Email: margol@trck.com Website: www.thompsoncreekmetals.com